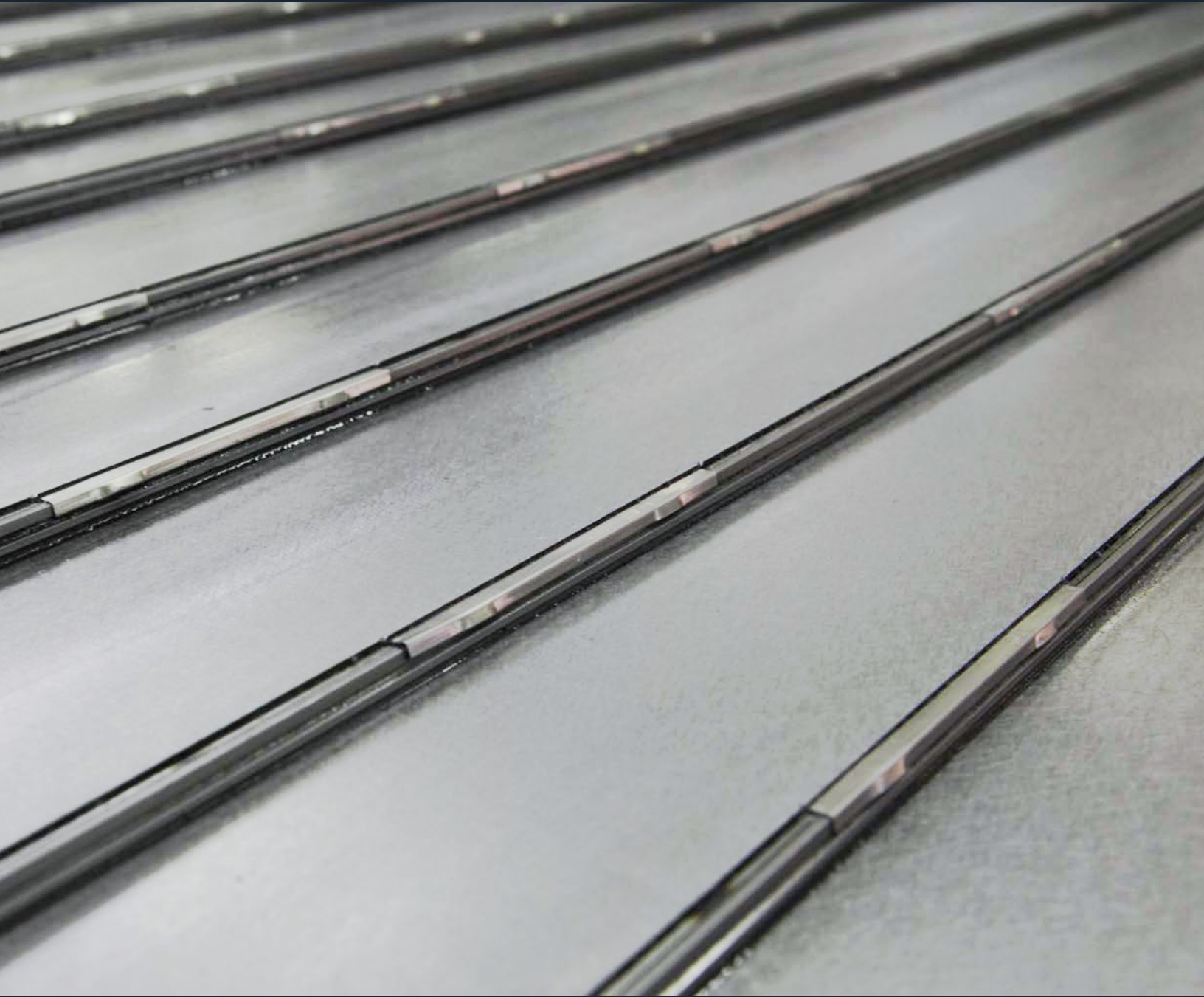


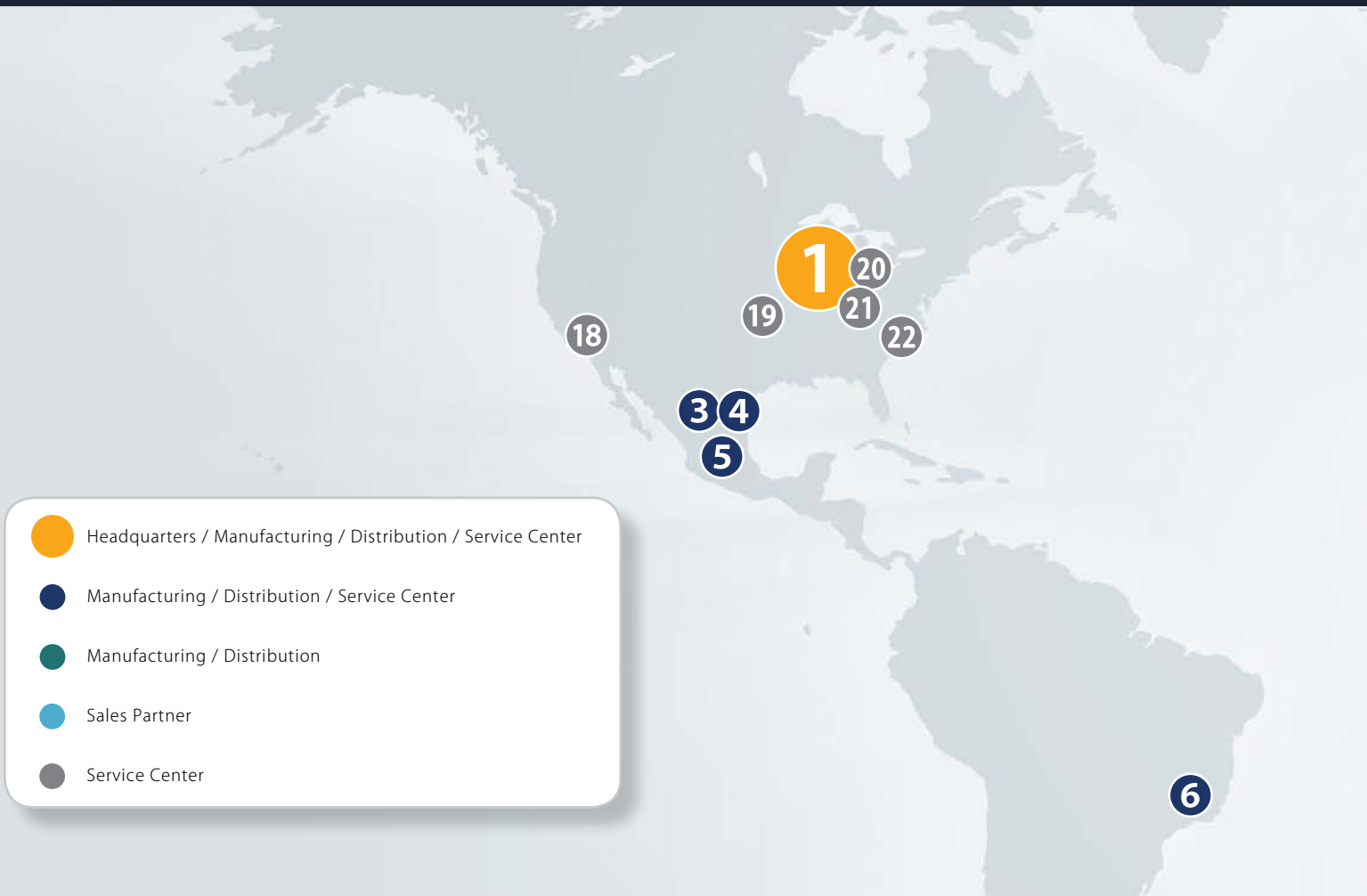
# TELESCOPING STEEL COVERS

STANDARD DESIGNS | CUSTOM DESIGNS | SPECIAL SOLUTIONS | WIPER SYSTEMS | SERVICE & REPAIR



# HENNIG WORLDWIDE

manufacturing / sales / service centers



- Headquarters / Manufacturing / Distribution / Service Center
- Manufacturing / Distribution / Service Center
- Manufacturing / Distribution
- Sales Partner
- Service Center

**1 Hennig, Inc. Global Headquarters**  
9900 North Alpine Road  
Machesney Park, IL 61115  
P: + 01 815-316-5124  
F: + 01 815-636-9737  
info@hennig-inc.com

**2 Hennig GmbH European Headquarters**  
Überrheinerstrasse 5  
D-85551 Kirchheim  
P: + 49 89 96096-0  
F: + 49 89 96096-120  
info@hennig-gmbh.de

**3 Hennig / Gaden, S.A. de C.V.**  
Calzada Abastos N° 235  
Col. Santa María  
Torreón Coahuila, C.P. 27020  
P: + 01 (871) 268 2449  
F: + 01 (871) 268 2449  
ventas@grupogaden.com

**4 Hennig / Gaden, S.A. de C.V.**  
Calle Primera N° 1037  
Col. Ministro Nazario Ortiz  
Saltillo, Coahuila, C.P. 25100  
P: + 01 (844) 180 0294  
F: + 01 (844) 180 029  
ventas@grupogaden.com

**5 Hennig / Gaden, S.A. de C.V.**  
Silca N° 4, Col. Vista Hermosa  
Tlalnepantla, México, C.P. 54080  
P: + 52 (55) 5318 4146  
F: + 52 (55) 5319 32  
ventas@grupogaden.com

**6 Cobsen Ltda.**  
R. Benedito Mazulquim, 425  
18550-000 Boituva CEP, Brazil  
P: + 55 15 3263-4042  
F: + 55 15 3263-4070  
cobsen@cobsen.com.br

**7 Hennig U.K. Ltd.**  
Unit 6, Challenge Close  
Coventry CV1 5JG  
P: + 44 24 76555690  
F: + 44 24 76256591  
sales@henniguk.com

**8 Sermeto E.I. SAS**  
Les Rebrillons  
03300 Creuzier-le-Neuf  
P: + 33 470 58 4740  
F: + 33 470 58 0022  
contact@sermeto-ei.com

**9 Hennig CZ s.r.o.**  
Klánovická 334  
250 82 Úvaly, CZ  
P: + 420 2810 91631  
F: + 420 2810 91625  
info@hennig-cz.com

**10 Sur Hennig Pvt Ltd.**  
1B, Peenya Ind. Area  
Bangalore 560058  
P: + 91 80 39285510  
F: + 91 80 39285526  
surhennigblr@gmail.com

**11 Thodacon Machine Tool Protection Co. Ltd.**  
Lu-ou Road No.43  
Hudai Industrial Park, Bin District  
Wuxi 214161 Jiangsu Province, China  
P: + 86 510 8329 1518  
F: + 86 510 8329 1598  
sales@thodacon.cn

**12 Osung Mechatronics Co. Ltd.**  
Gyungnam Masan-city  
Jinbuk-myun Shincon-li 413-2  
South Korea  
P: + 82 55 271 1821  
F: + 82 55 271 1820  
osgijeon@naver.com



**13 Enomoto**  
5-10 Sohara Koa-Cho  
Kakamigahara-Shi, Japan  
P: + 81 583 832178  
F: + 81 583 897435  
kashida@enomotoweb.com

**14 Euro-Renaex Sistemas S.L.**  
Pº Ubarburu 76, Pab.34 - Pol.27  
20014 San Sebastian, Spain  
P: + 34 943 472225  
F: + 34 943 458254  
info@ersistemas.com

**15 B & S Industrieel Onderhoud**  
Zirkoonstraat 7, 7554 TT Hengelo (Ov.)  
Postbus 69, 7550 AB Hengelo (Ov.)  
P: + 31 74 8510600  
F: + 31 74 8510605  
megen@bs.nl

**16 Svenska Maskinkomponenter AB**  
Brunnsäkersvägen 9  
64593 Strängnäs  
P: + 46 8 53470770  
F: + 46 8 53470775  
info@svemako.se

**17 Lubrication Equipment Pty. Ltd.**  
6, Liebenberg Road  
1451 Alrode, Johannesburg  
P: + 27 11 8645785  
F: + 27 11 8648231  
sales@lubrequip.co.za

**18 Hennig, Inc. California Service Center**  
11690 Pacific Avenue  
Fontana, CA 92337  
P: + 01 909-420-5796  
info@hennig-inc.com

**19 Hennig, Inc. Oklahoma Service Center**  
900395 S. 3420 Road  
Chandler, OK 74834  
P: + 01 405-258-6702  
F: + 01 405-258-9971  
info@hennig-inc.com

**20 Hennig, Inc. Michigan Service Center**  
11879 Brookfield Road  
Livonia, MI 48150  
P: + 01 734-523-8274  
F: + 01 855-427-1549  
info@hennig-inc.com

**21 Hennig, Inc. Ohio Service Center**  
11431 Williamson Road  
Blue Ash, OH 45241  
P: + 01 513-247-0838  
F: + 01 513-247-0840  
info@hennig-inc.com

**22 Hennig, Inc. N. Carolina Service Center**  
8916 Pioneer Avenue, Dock 14  
Charlotte NC 28273  
P: + 01 704-588-7200  
F: + 01 704-588-7200  
info@hennig-inc.com

# TELESCOPIC STEEL COVERS

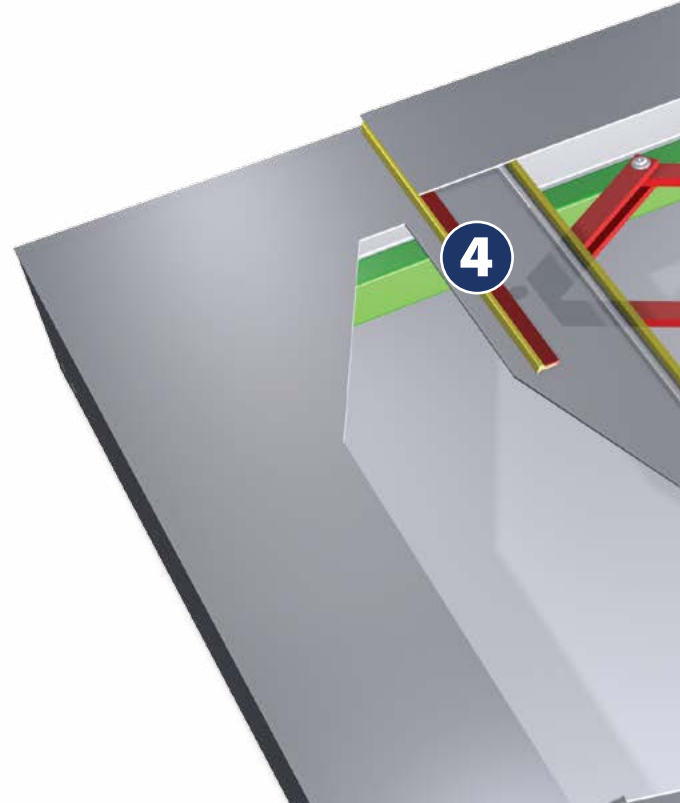
## overview

### GENERAL INFO

The range of steel way covers manufactured by Hennig is unlimited. With over 65 years of experience in the industry, there is little that we haven't seen and built.

With manufacturing facilities located worldwide, we are knowledgeable of nearly every telescopic steel way cover application in the world. This experience also enables us to design and manufacture OEM or custom steel way covers for state of the art equipment, high speed machines, as well as unusual and unique applications.

- All forms are made from rolled commercial quality steel sheets. Standard gages 1.5 mm (16 gauge) to 3 mm (11 gauge). Other gages available depending on the application.
- Corrosion-resistant stainless steel can be used for extreme conditions.
- Speeds from 20 to 150m/min can be attained.
- Way wipers, guides, rollers and damping elements are interchangeable.
- Coolant troughs (preventing coolant entering the boxes) can be included in the design of different models.
- We offer service, repair, and reverse engineering for all Hennig and non-Hennig telescopic steel covers



### FEATURES

#### ① steel

Commercial quality steel is used to withstand the abuses of the shop environment. Standard sheet thicknesses range from 1.5 mm (16 gauge) to 3 mm (11 gauge). Other gages available depending on the application.

#### ② guides

Brass or non-metallic guides are used on the top and sides of the covers. Small and medium size covers are supported with non-metallic, low friction guide shoes.

#### ③ interlocking design

Wrap around construction ensures precise location of individual cover sections and automatically provides the necessary initial preload for the flexible wipers.

#### ④ wiper systems

High endurance, insertable polyurethane wipers keep the cover clean and seal out chips, dust and coolants. See pages 11-12 for details.

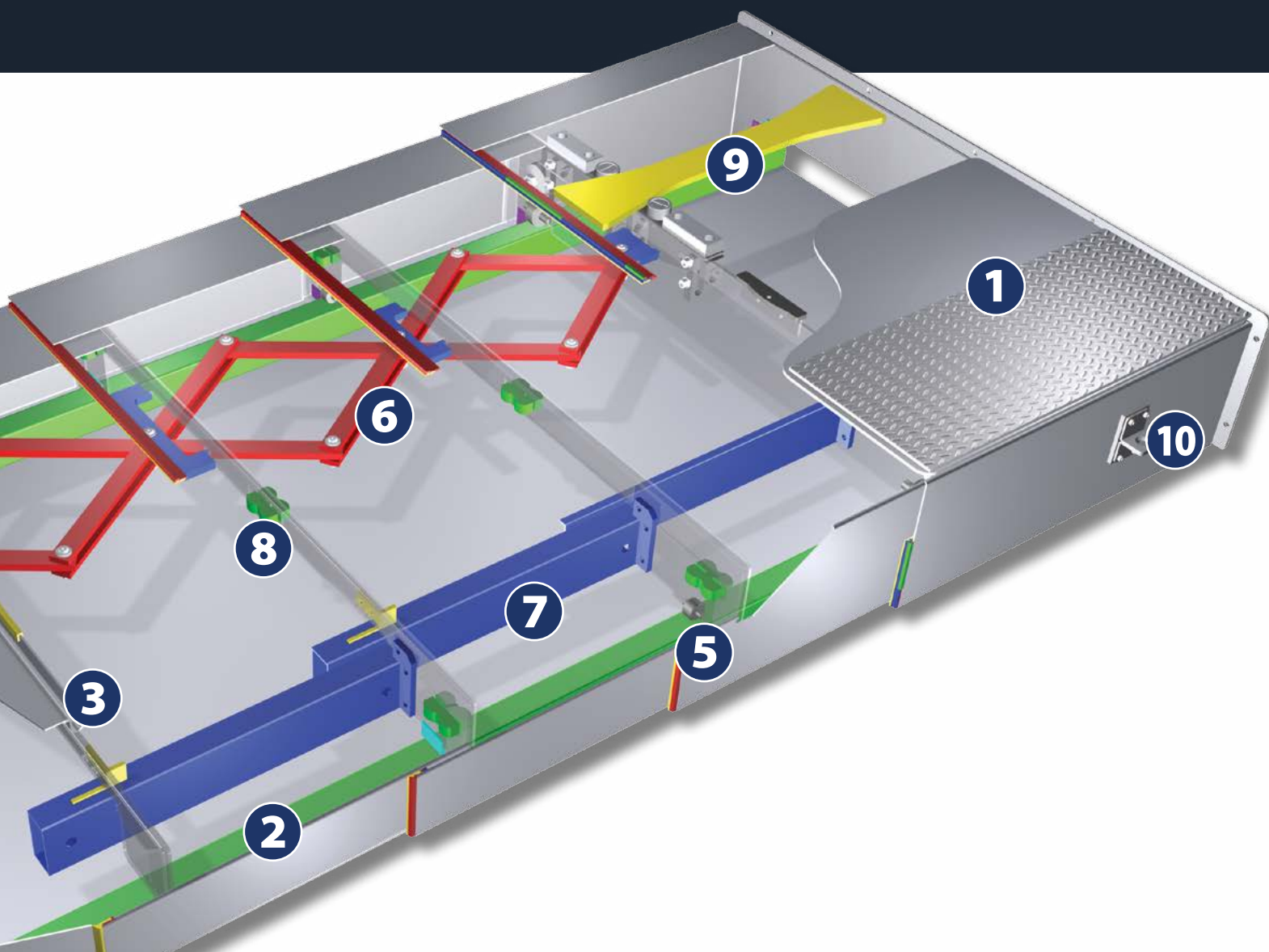
#### ⑤ support rollers

To ensure smooth, accurate operation, large covers are provided with rollers. Ball bearing, needle bearing, and many other roller options are available

#### ⑥ scissors

Depending on speed and size of application, scissors can be used for a smooth operation.





## OPTIONS

### ⑦ high speed module

Perfect guidance for high speed covers up to 200 m/min (660 ft/min) and accelerations up to 2Gs over the entire traverse path. Ideal for linear motor machines.

### ⑧ damping elements (bumpers)

Bumpers are used based on machine speeds.

### ⑨ wedge dampener (ME module)

Used to soften impact on the boxes.  
See page 9 for more information.

### ⑩ lifting lugs

For ease of installation, lifting lugs can be provided.

not pictured

### way extension brackets

Extend from the machine ways to provide support for the cover while it is in a compressed position.

### inspection openings

For quick, easy inspections hinged or Plexiglas® panes may be specified.

## SERVICE & REPAIR

We offer service and repair for all way covers (Hennig & non-Hennig brands) with a worldwide network of facilities.

*See page 16 for Repairs Request For Quote Worksheet.  
See page 17-18 for a full list of our service capabilities.*

# TELESCOPIC STEEL COVERS

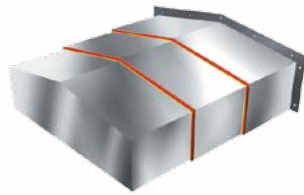
standard designs



## FLAT (TYPE AA)

The flat, u-shaped design represents the best economical solution for the protection of slideways. Available in horizontal or vertical format.

*See page 13-14 for Quote Request Worksheet*



## PEAK (TYPE BB)

The roof-shaped design deflects coolant and swarf on either side, depending on the angle of inclination. Additionally, the ridge provides higher rigidity and perfect guidance of the boxes. Available in horizontal or vertical format.

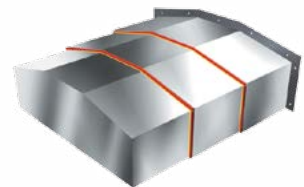
*See page 13-14 for Quote Request Worksheet*



## SLANT (TYPE CC)

The slope of this design ensures the diversion of coolant and swarf in one direction, depending on the angle of inclination. Available in horizontal or vertical format.

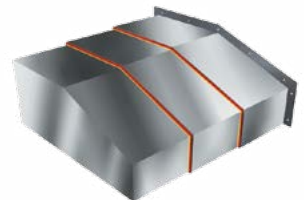
*See page 13-14 for Quote Request Worksheet*



## HIP ROOF (TYPE DD)

The flat-roof form is used for broad covers to provide maximum rigidity of the box surfaces. Available in horizontal or vertical format.

*See page 13-14 for Quote Request Worksheet*



## FLAT/SLOPE (TYPE EE)

The pent-roof design meets special geometric requirements and improves the draining of coolant and swarf, depending on the angle of inclination. The additional folded edge increases the rigidity of the boxes. Available in horizontal or vertical format.

*See page 13-14 for Quote Request Worksheet*



## CROSS BEAM

Cross-beam covers can be manufactured in models 1 to 5. For more than 3 boxes, however, it is necessary to provide an additional return at the top slideway to prevent the individual boxes from tilting or disengaging.

*See page 13-14 for Quote Request Worksheet*

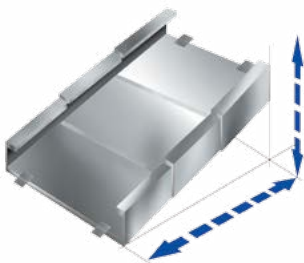
All shapes can be customized to fit your application.



## VERTICAL SLIDING PLATE

In this type of cover, the individual plates slide in separate guide rails. Since these types of covers do not require slideways, they are particularly suited for the protection of column recesses. In the presence of swarf and coolant, the vertical sliding plate covers can only be mounted vertically. The guide rails are available in various materials to meet individual requirements.

*See page 17 for Quote Request Worksheet*



## DUAL AXIS MOTION

Dual-Axis covers are typically moving behind the tables and under the spindle when space is limited. This design is limited to 3 boxes unless guide rails are used, and must be flat design for this style of cover.

*See page 15-16 for Quote Request Worksheet*

All shapes can be customized to fit your application.



## XYZ MODULE

(modular face shield)

Hennig manufactures vertical-wall telescopic steel covers to deliver full protection of the X and Y-axes on horizontal-spindle machining centers.

The precision ways and CNC feedback devices are completely protected against the hot chips and flood coolant that can potentially affect machine uptime and accuracy. Based on space availability, these covers can be designed with telescopic steel boxes, stainless steel or fabric roll-up aprons, bellows with steel plate protection (lamellas), or our new Aluminum FlexProtect system.

# TELESCOPIC STEEL COVERS

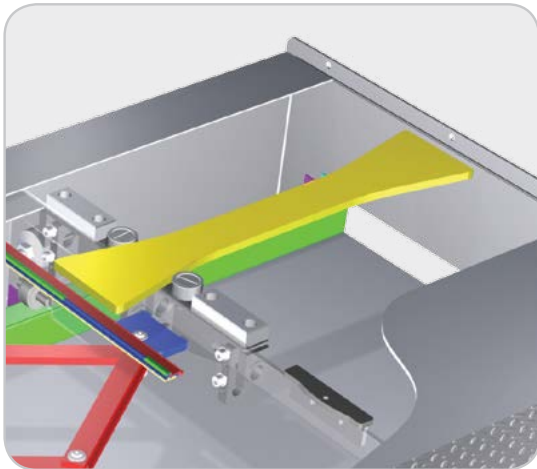
custom designs & special solutions



## CUSTOM DESIGNS

for complicated slideway forms

Different requirements and environmental conditions, complicated slideway forms, and less than ideal spacial conditions of special machines demand close cooperation between our design engineers and the machine tool manufacturers. Our engineers design your covers with knowhow, creativity and an attractive price-performance ratio.



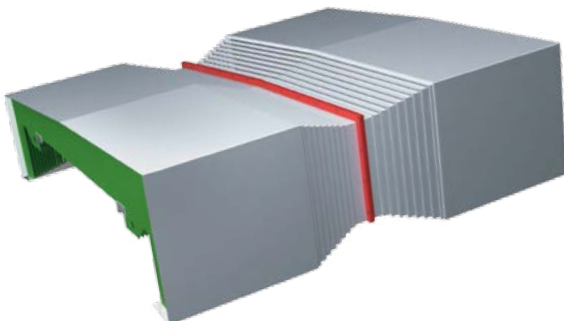
ME Module shown in yellow

## ME MODULE

for heavy loads

High feed rates and accelerations are no longer excluded with large, heavy telescopic steel covers. The transport mechanism eliminates high limit stop forces and corresponding noises in all operational positions, moving smoothly when the covers are pulled apart as well as when they come together.

Test runs at speeds exceeding 328 feet per minute (100 meters per minute) and accelerations exceeding 2g were absolutely trouble-free. The system is not positively driven; as a result, it doesn't have to move the entire mass; the only boxes moved are the ones that are needed. The mechanically muffled units travel on guides which guarantee extremely high stability.



## COUPLED TELESCOPIC STEEL COVER

for longer travel

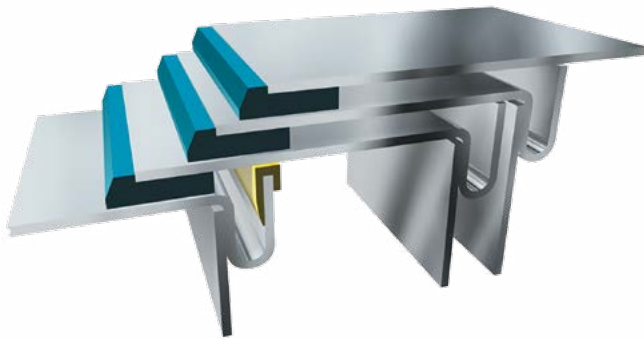
By coupling a telescopic steel cover, a longer travel can be obtained. The box height above the ways, based on the same travel, is less with coupled telescopic steel covers than with one individual cover. The compressed length however is longer.



## WATER-TIGHT TELESCOPIC STEEL COVERS

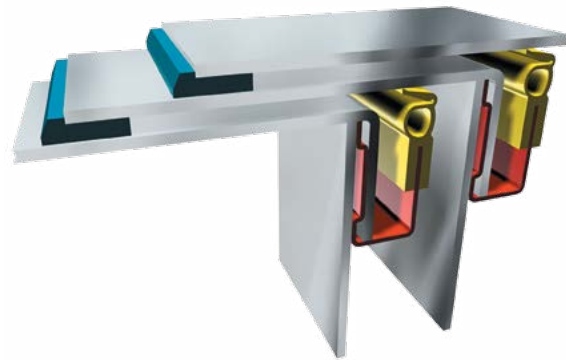
Our standard TSC designs are splash proof and suited for high traversing speeds.

For high coolant applications, we offer water-tight covers using gutters to divert coolant.



### integral gutter

The gutter is formed as an integral part of the rear panel of the individual boxes. This version can be manufactured in a cover width of up to approximately 2000 mm.



### separate gutter

We can manufacture separate gutters for covers more than 2000 mm wide. In this design, a specially developed wiper diverts the coolant along the inner side of the boxes. Due to its large cross-section, a separate gutter deflects the water optimally.



### scheduled gullet

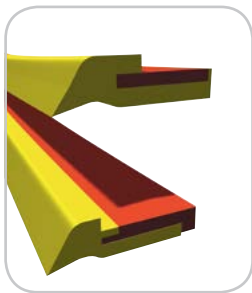
An attached water trough can be utilized with a variety of dimensions and is used mainly for large telescopic steel covers.

# TELESCOPIC STEEL COVERS

## wiper systems

Wiper systems specially developed for telescopic steel covers. For particular requirements such as limited space for mounting or use in the presence of high volumes of chips produced, we also offer suitable solutions.

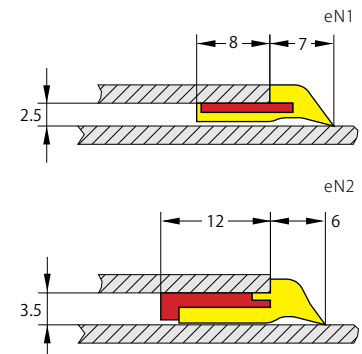
■ wiper lip ■ profile support ▨ sheet metal box ■ damping material ■ profile support



### eN SERIES

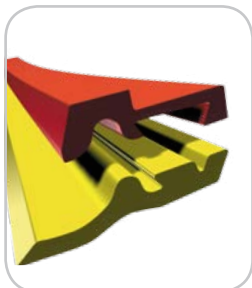
- Used on telescopic steel covers for slideways with small cross-sections
- Wiper lip vulcanized to a flat steel profile
- Highly wear-resistant polyurethane lip, resistant to oil, coolants and microbes
- Standard length of the eN way wiper: 500 mm

*See page 60 for more information*



### C SERIES

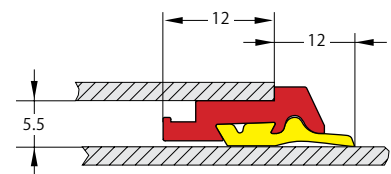
- Same design for all types of C wipers (except CL1)
- Highly wear-resistant polyurethane lips ensuring optimum resistance to water, coolants, chemicals and oil
- Various Shore hardnesses available as required (dry, fluid and mixed machining, as well as native oils)

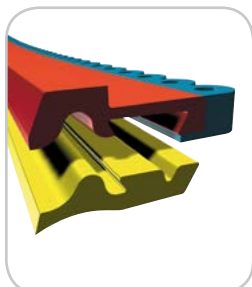


### CL1

- Usable for large surfaces and aluminum apron systems for manifold applications
- Optimum wiping effect. Will wipe uneven surfaces up to 4 mm
- Highly durable and resistance against all common coolants
- Exchangeable and suitable for all profiles of series C2, 3, 5 and 6 (Illustration: CL1 with C5 profile)

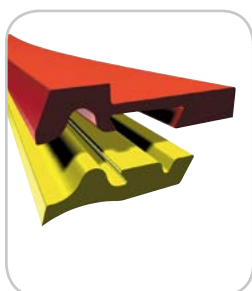
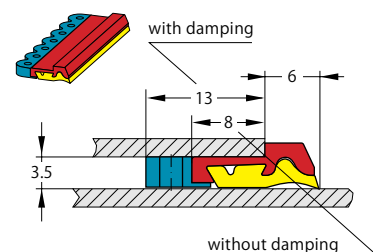
*See page 20 for more information*





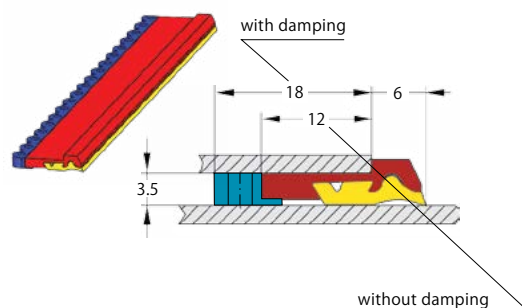
## C2

- Smallest wiper of the "C" series
- Replaceable wiper lips
- Very little space required (regarding the mounting height and depth)
- Also available with a rubber profile vulcanized on the profiled support, for optimum damping properties at high traverse speeds (illustration: C2 with damping)



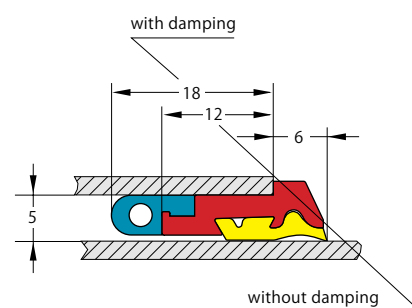
## C3

- Wider profile to ensure a better adhesion when spot-welding it to the box
- Replaceable wiper lips
- Very little space (mounting height) required
- Can be screwed onto the cover box
- Optimum rigidity of the cover box in the wiper area
- Available with and without damping
- Assembly dimension with damping 18mm



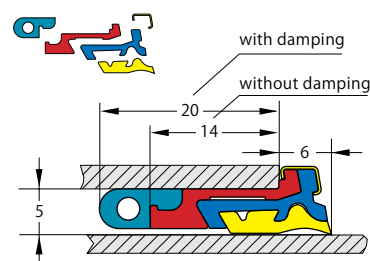
## C5

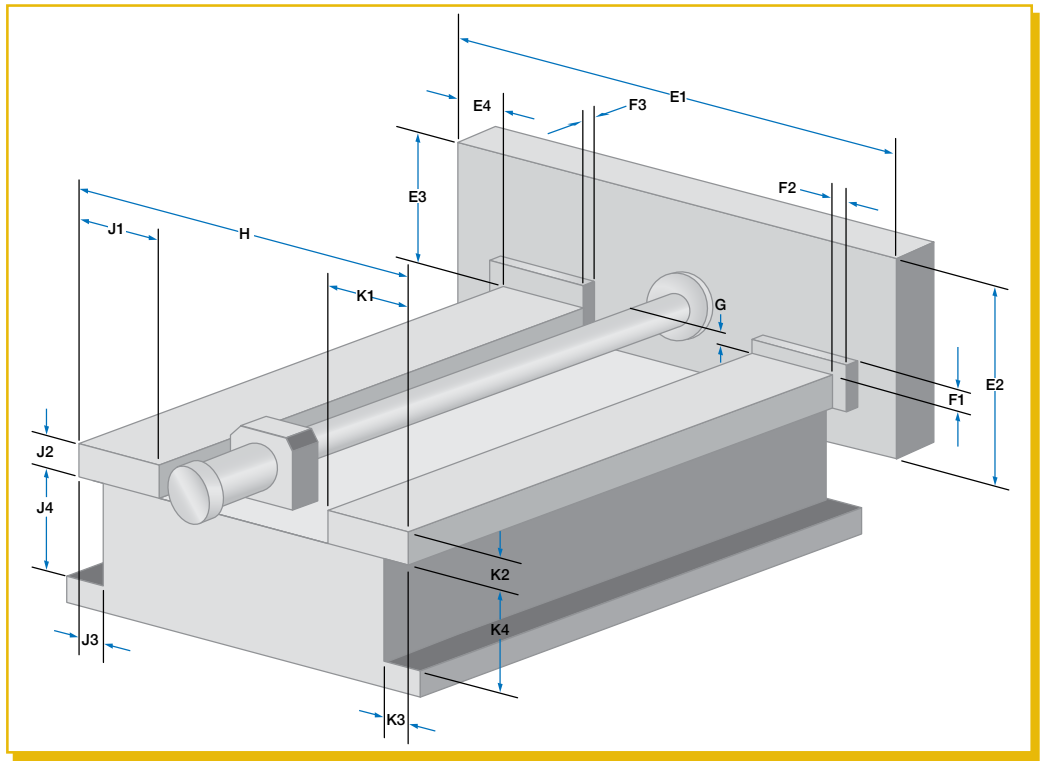
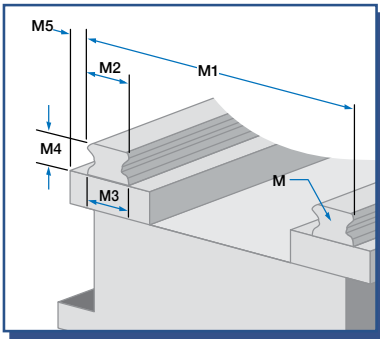
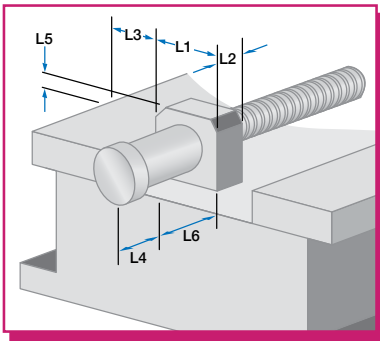
- Designed for large covers
- Replaceable wiper lips
- A combination of C5 and C3 wipers is possible
- Optimum rigidity of the cover box in the wiper area
- Enlarged return gutter to ensure a rapid draining of the coolant
- Available with and without damping (illustration: C5 with damping)



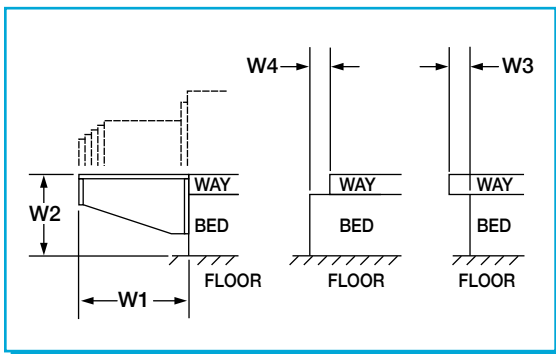
## C6

- Can be replaced directly on the machine without disassembling the cover
- Time saving and cost-effective
- Enlarged return gutter to ensure a rapid draining of the coolant
- Available with and without damping (illustration: C6 with damping)
- Replaceable profile (shown in blue) is fixed with spring clamps
- Solid profile support (shown in red) is welded with the box plate and remains on the cover

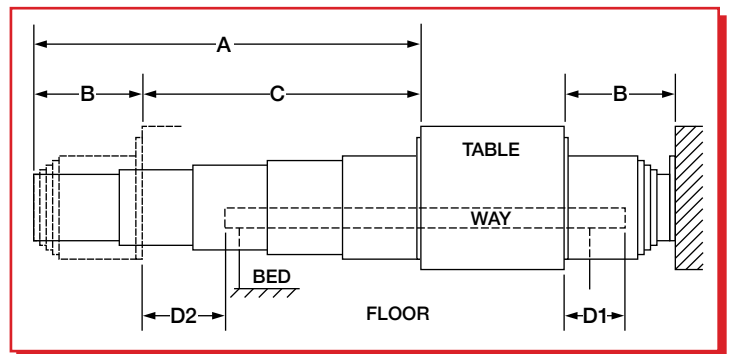




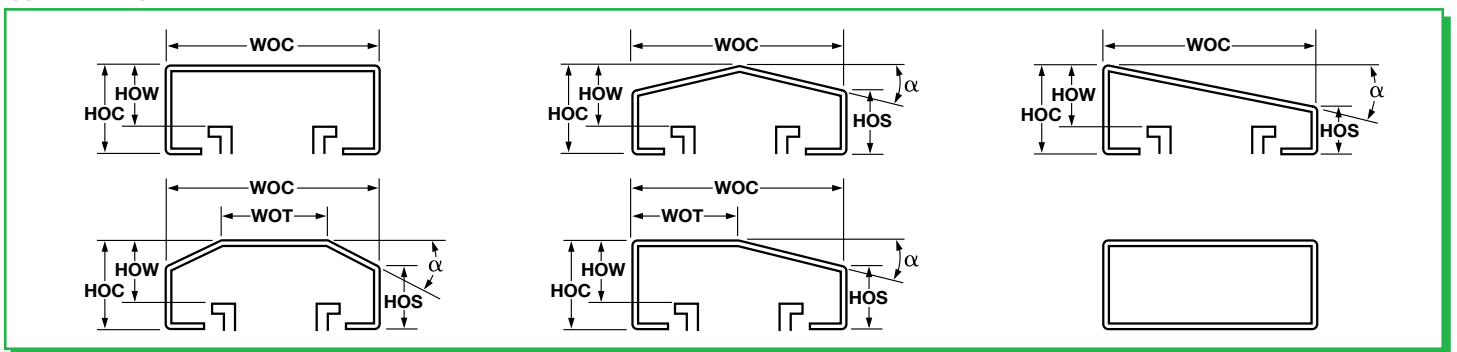
#### WAY EXTENSION BRACKETS



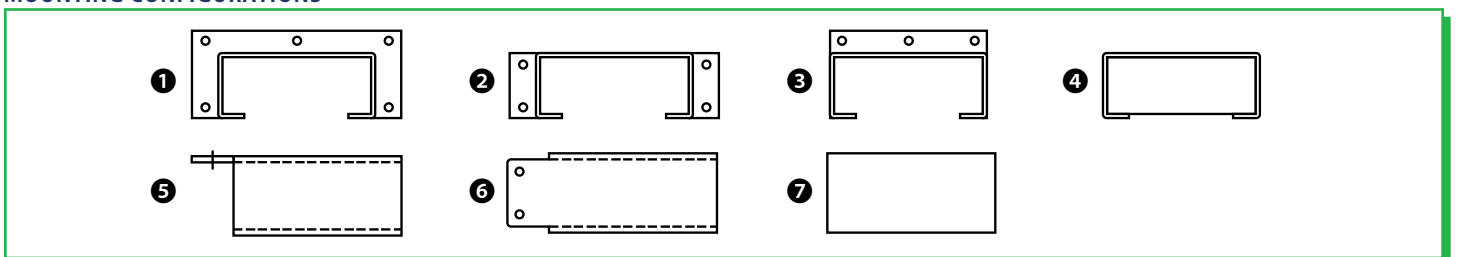
#### SIDE VIEW



#### COVER TYPES



#### MOUNTING CONFIGURATIONS



# TELESCOPIC STEEL COVERS QUOTE REQUEST



[www.hennigworldwide.com](http://www.hennigworldwide.com)

Please complete this form and email or fax to your desired location  
(see pages 1-2 for contact info)

## 1 COMPANY (complete address)

\_\_\_\_\_  
\_\_\_\_\_  
\_\_\_\_\_  
\_\_\_\_\_

Name \_\_\_\_\_  
Title \_\_\_\_\_  
E-mail \_\_\_\_\_  
Phone \_\_\_\_\_ Fax \_\_\_\_\_ Date \_\_\_\_/\_\_\_\_/\_\_\_\_

## 2 TECHNICAL DATA / EXISTING COVER DIMENSIONS

Quantity \_\_\_\_\_ ☐ Each ☐ Set  
Number of Boxes \_\_\_\_\_  
Cover Type \_\_\_\_\_  
Mounting Configuration \_\_\_\_\_  
Width of Cover \_\_\_\_\_

Height of Cover \_\_\_\_\_  
Height Over Ways \_\_\_\_\_  
Angle \_\_\_\_\_  
Height of Side (types BB, CC, DD, EE) \_\_\_\_\_  
Width of Top (types DD, EE) \_\_\_\_\_

## 3 APPLICATION

Manufacturer ☐ Hennig ☐ Enomoto ☐ Other  
Hennig or Enomoto Part # \_\_\_\_\_  
OEM Part # \_\_\_\_\_

### COVER ORIENTATION (check one)

☐ Horizontal ☐ Vertical ☐ Cross Rail  
☐ Slant Bed ☐ Column/Table ☐ \_\_\_\_\_

### Machine Type

Make \_\_\_\_\_  
Model \_\_\_\_\_  
Axis ☐ X ☐ Y ☐ Z ☐ Other  
Photos Available? ☐ Yes ☐ No  
DWGs or Sketches available? ☐ Yes ☐ No

### Operating Environment

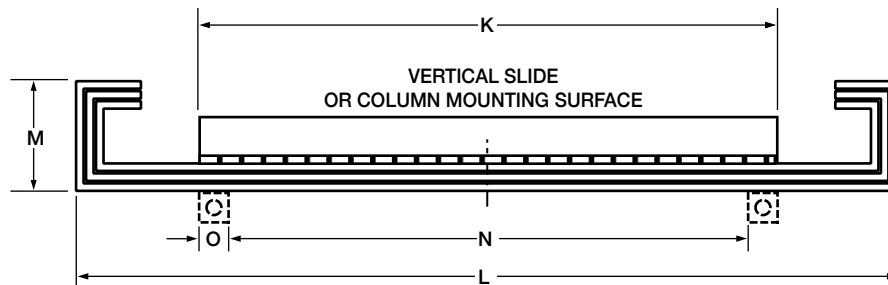
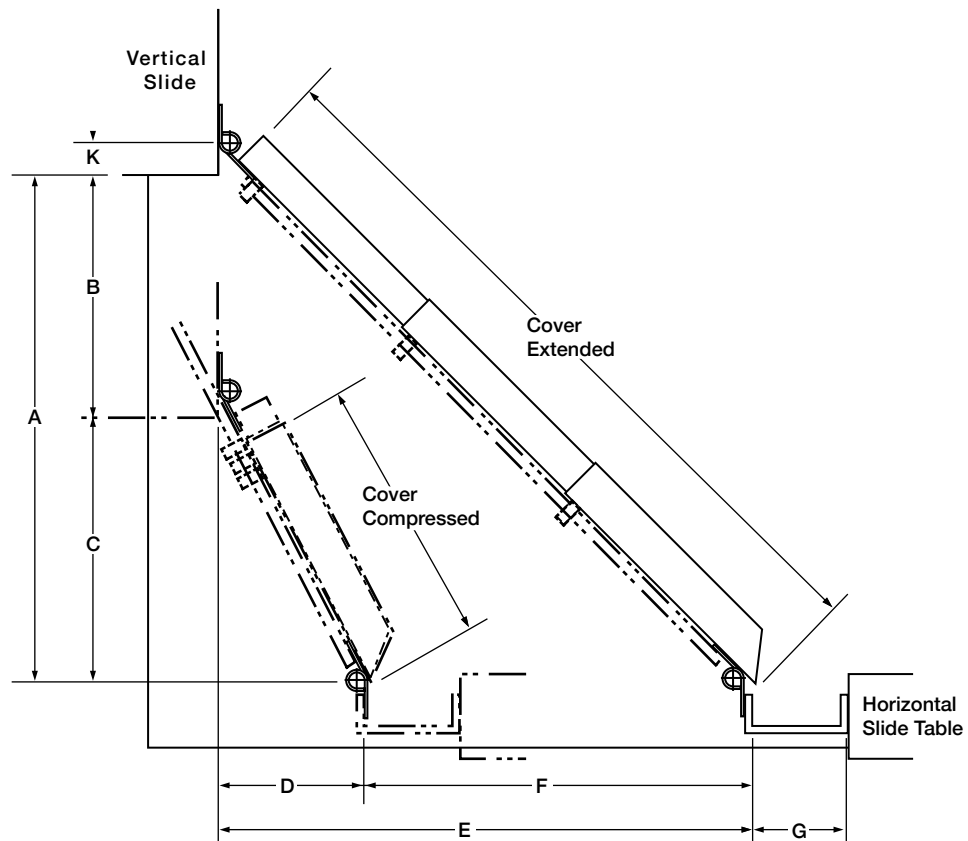
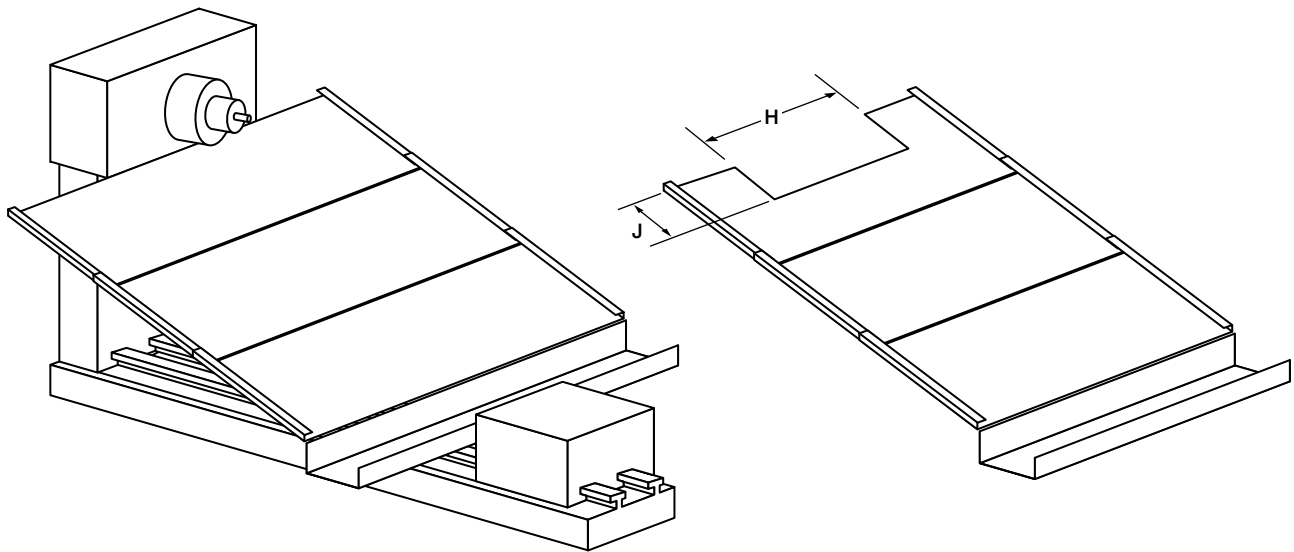
☐ Dry ☐ Grinding ☐ Hot Chip  
☐ Heavy Coolant ☐ Other \_\_\_\_\_  
Operating Temperature Range \_\_\_\_\_  
Maximum Travel Speed \_\_\_\_\_

## 4 DIMENSIONS

**A** Extended length \_\_\_\_\_  
**B** Compressed length \_\_\_\_\_  
**C** Travel \_\_\_\_\_  
**D1** End of way to table when compressed \_\_\_\_\_  
**D2** End of way to table at over travel \_\_\_\_\_  
**E1** Table width \_\_\_\_\_  
**E2** Table height \_\_\_\_\_  
**E3** Table height above way \_\_\_\_\_  
**E4** Side of way to side of table \_\_\_\_\_  
**F1** Way wiper height above way \_\_\_\_\_  
**F2** Side of way wipers to side of way \_\_\_\_\_  
**F3** Way wiper to table (depth) \_\_\_\_\_  
**G** Height of ball screw above way \_\_\_\_\_  
**H** Width over ways \_\_\_\_\_  
**J1** Individual width of way \_\_\_\_\_  
**J2** Individual height of way \_\_\_\_\_  
**J3** Side of way to side of casting \_\_\_\_\_  
**J4** Casting distance below way \_\_\_\_\_  
**K1** Individual width of way \_\_\_\_\_

**K2** Individual height of way \_\_\_\_\_  
**K3** Side of way to side of casting \_\_\_\_\_  
**K4** Casting distance below way \_\_\_\_\_  
**L1** Width of drive mount \_\_\_\_\_  
**L2** Depth of drive mount \_\_\_\_\_  
**L3** Side of way to side of drive mount \_\_\_\_\_  
**L4** End of way to front of motor \_\_\_\_\_  
**L5** Drive mount height above way \_\_\_\_\_  
**L6** End of way to drive mount \_\_\_\_\_  
**M** Rail type \_\_\_\_\_  
**M1** Width over linear rails \_\_\_\_\_  
**M2** Rail width (top) \_\_\_\_\_  
**M3** Rail width (bottom) \_\_\_\_\_  
**M4** Rail height \_\_\_\_\_  
**M5** Side of casting to side of rail \_\_\_\_\_  
**W1** Way extension length \_\_\_\_\_  
**W2** Way height to floor \_\_\_\_\_  
**W3** Way to bed offset \_\_\_\_\_  
**W4** Bed to way offset \_\_\_\_\_





# DUAL AXIS COVERS QUOTE REQUEST

**HENNIG**

[www.hennigworldwide.com](http://www.hennigworldwide.com)

Please complete this form and email or fax to your desired location  
(see pages 1-2 for contact info)

## 1 COMPANY (complete address)

\_\_\_\_\_  
\_\_\_\_\_  
\_\_\_\_\_  
\_\_\_\_\_

Name \_\_\_\_\_  
Title \_\_\_\_\_  
E-mail \_\_\_\_\_  
Phone \_\_\_\_\_ Fax \_\_\_\_\_ Date \_\_\_\_/\_\_\_\_/\_\_\_\_

## 2 APPLICATION

Quantity \_\_\_\_\_ Number of Boxes \_\_\_\_\_

### EXISTING COVER

Manufacturer ☐ Hennig ☐ Enomoto ☐ Other

Hennig or Enomoto Part # \_\_\_\_\_

OEM Part # \_\_\_\_\_

### MACHINE TYPE

Make \_\_\_\_\_

Model \_\_\_\_\_

Photos Available? ☐ Yes ☐ No

DWG's or Sketches available? ☐ Yes ☐ No

Operating Temperature Range \_\_\_\_\_

Maximum Travel Speed \_\_\_\_\_

Movements/Day \_\_\_\_\_

## 3 DIMENSIONS

Cover extended \_\_\_\_\_

Cover compressed \_\_\_\_\_

**A** Max vertical extension of slide \_\_\_\_\_

**B** Vertical slide travel \_\_\_\_\_

**C** Min compressed vertical slide length \_\_\_\_\_

**D** Min compressed horizontal slide length \_\_\_\_\_

**E** Max horizontal extension of slide \_\_\_\_\_

**F** Horizontal slide travel \_\_\_\_\_

**G** Width of trough \_\_\_\_\_

**H** Cut-out around column width \_\_\_\_\_

**J** Extension beyond column depth \_\_\_\_\_

**K** Vertical Slide \_\_\_\_\_

**L** Width of cover \_\_\_\_\_

**M** Height of cover \_\_\_\_\_

**N** Distance between guide bars \_\_\_\_\_

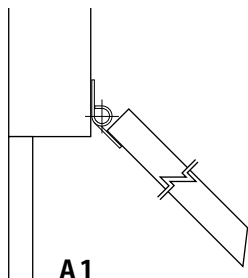
**O** Guide bar width \_\_\_\_\_

Mounting Option - Upper (see below) \_\_\_\_\_

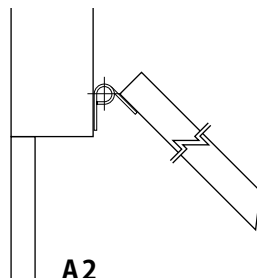
Mounting Option - Lower (see below) \_\_\_\_\_

## 4 MOUNTING OPTIONS

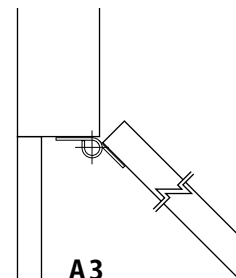
### UPPER



**A1**

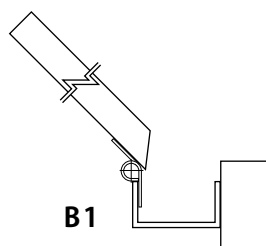


**A2**

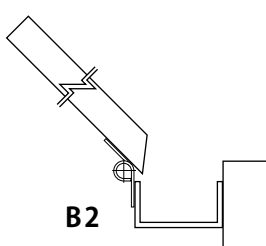


**A3**

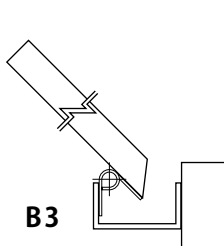
### LOWER



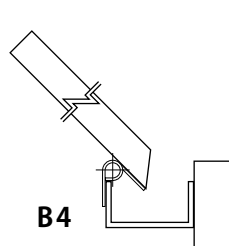
**B1**



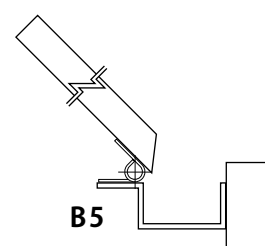
**B2**



**B3**



**B4**



**B5**

# VERTICAL SLIDING PLATE QUOTE REQUEST

**|||||HENNIG**

[www.hennigworldwide.com](http://www.hennigworldwide.com)

Please complete this form and email or fax to your desired location  
(see pages 1-2 for contact info)

## 1 COMPANY (complete address)

\_\_\_\_\_  
\_\_\_\_\_  
\_\_\_\_\_  
\_\_\_\_\_

Name \_\_\_\_\_  
Title \_\_\_\_\_  
E-mail \_\_\_\_\_  
Phone \_\_\_\_\_ Fax \_\_\_\_\_ Date \_\_\_\_/\_\_\_\_/\_\_\_\_

## 2 APPLICATION

Quantity \_\_\_\_\_

### EXISTING COVER

Manufacturer ☐ Hennig ☐ Enomoto ☐ Other

Hennig or Enomoto Part # \_\_\_\_\_

OEM Part # \_\_\_\_\_

### MACHINE TYPE

Make \_\_\_\_\_

Model \_\_\_\_\_

Photos Available? ☐ Yes ☐ No

DWG's or Sketches available? ☐ Yes ☐ No

Operating Temperature Range \_\_\_\_\_

Maximum Travel Speed \_\_\_\_\_

Movements/Day \_\_\_\_\_

## 3 DIMENSIONS

**A** Overall length \_\_\_\_\_

**B** Top compressed \_\_\_\_\_

**B1** Number of top plates \_\_\_\_\_

**C** Travel \_\_\_\_\_

**D** Lower compressed \_\_\_\_\_

**D1** Number of lower plates \_\_\_\_\_

**E** Width \_\_\_\_\_

**F** Width with rails \_\_\_\_\_

**G** Rail width \_\_\_\_\_

**H** Diameter or rectangular opening \_\_\_\_\_

**I** Rail type ☐ Type 1 ☐ Type 2 ☐ Other \_\_\_\_\_

**J** Rail thickness \_\_\_\_\_

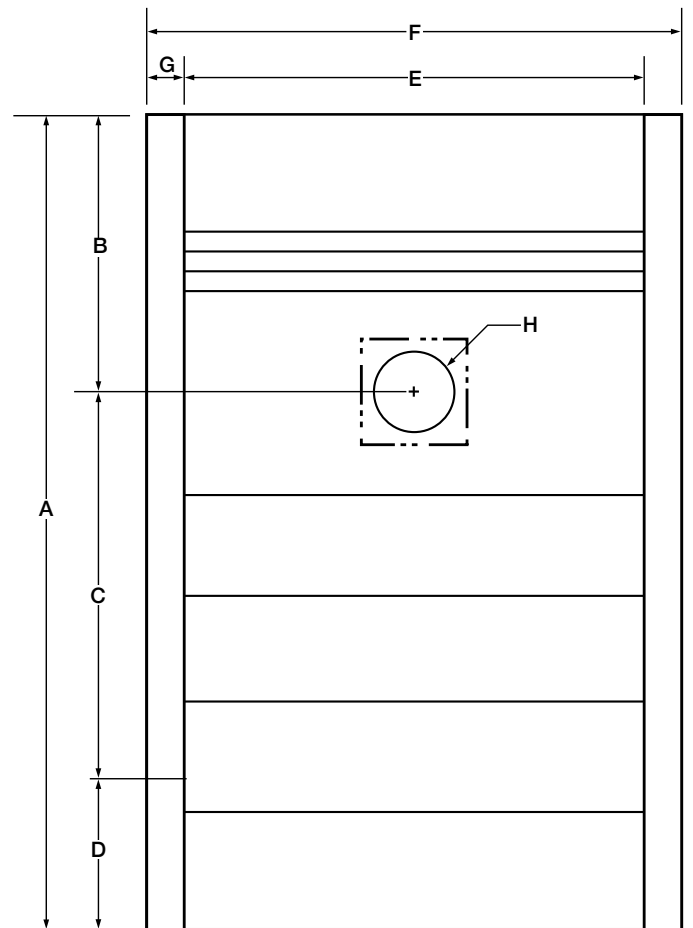
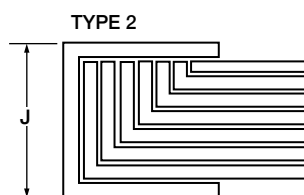
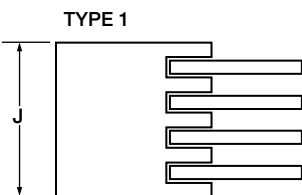
**K** Mounting hole pattern \_\_\_\_\_

**L** Scissor option

Top: ☐ none ☐ single ☐ double

Bottom: ☐ none ☐ single ☐ double

Please include additional sketches or CAD files if available.



# STEEL COVER REPAIRS QUOTE REQUEST

Please complete this form and email or fax to your desired location  
(see pages 1-2 for contact info)

**HENNIG**

www.hennigworldwide.com

## HENNIG WAY COVER SERVICE & REPAIR

- Service & Repairs for Hennig & non-Hennig Way Covers
- Repair & Refurbishment of All Way Cover Components
- Training for Maintenance & Repair of Way Covers
- Quick Turnaround & Expedited Service Available
- Reverse Engineering of Existing Way Covers
- On-Site Maintenance & Repair



### 1 COMPANY (complete address)

\_\_\_\_\_  
\_\_\_\_\_  
\_\_\_\_\_  
\_\_\_\_\_

Name \_\_\_\_\_  
Title \_\_\_\_\_  
E-mail \_\_\_\_\_  
Phone \_\_\_\_\_ Fax \_\_\_\_\_ Date \_\_\_\_/\_\_\_\_/\_\_\_\_

### 2 TECHNICAL DATA / EXISTING COVER DIMENSIONS

Quantity \_\_\_\_\_ Number of Boxes \_\_\_\_\_ Photos Available ☐ Yes ☐ No DWGs or Sketches Available ☐ Yes ☐ No  
Width of Cover (WOC) \_\_\_\_\_ Height of Cover (HOC) \_\_\_\_\_ Height Over Ways (HOW) \_\_\_\_\_  
Extended Length \_\_\_\_\_ Compressed Length \_\_\_\_\_ Travel \_\_\_\_\_

### 2 APPLICATION

Brand ☐ Hennig ☐ Enomoto ☐ Sermeto ☐ Cobsen ☐ Other \_\_\_\_\_  
Hennig / Enomoto / Sermeto / Cobsen Part # \_\_\_\_\_ OEM Part # \_\_\_\_\_

#### MACHINE TYPE

Make \_\_\_\_\_ Model \_\_\_\_\_  
Axis ☐ X ☐ Y ☐ Z ☐ Other \_\_\_\_\_ Maximum Travel Speed \_\_\_\_\_  
Cover Orientation ☐ Horizontal ☐ Vertical ☐ Cross Rail ☐ Slant Bed ☐ Column / Table ☐ Other \_\_\_\_\_  
Operating Environment of Cover ☐ Dry ☐ Grinding ☐ Hot Chip ☐ Heavy Coolant ☐ Other \_\_\_\_\_  
Rollers ☐ Yes ☐ No  
Scissors ☐ Yes ☐ No

**FOR A MORE ACCURATE QUOTE, PLEASE PROVIDE PICTURES OF THE DAMAGED WAY COVER.**

#### NOTES

\_\_\_\_\_  
\_\_\_\_\_  
\_\_\_\_\_  
\_\_\_\_\_  
\_\_\_\_\_  
\_\_\_\_\_  
\_\_\_\_\_

# SERVICE & REPAIR

scope of services

## WE KNOW HOW EXPENSIVE DOWNTIME CAN BE

That's why we offer quick, responsive, service for the following products:

- Telescopic Steel Covers (see next page for details)
- Bellow Covers
- Aprons & Roll Ups
- Modular Face Shield Systems
- Wiper Systems
- Walk-On Pit Covers

We provide repairs and replacement parts for all the products we sell. With our experienced technicians, it doesn't matter who manufactured the original product, the end result absolutely must meet Hennig standards for quality and safety before we will consider it finished.

## OUR SCOPE OF SERVICES:

- Preventative and Predictive Maintenance Training
- Way cover diagnostics and troubleshooting
- Extensive replacement spare parts inventory
- On-Site repairs of waycovers of any make on the market
- Logistics services for minimum downtime

## SERVICE & REPAIR CENTERS WORLDWIDE

We have 17 service centers located throughout the world, enabling us to provide fast, localized service no matter where you are. Below is a snapshot of our service & repair locations.

*For more details and contact info, see pages 1-2.*





# SERVICE & REPAIR

for telescopic steel covers

## REPAIR & REFURBISHING SERVICES

At Hennig we service everything we sell. Our repair and refurbishment facilities are located in regions worldwide, so you get fast, localized service from experts who speak your language and deeply understand the systems you're using. We have the resources to keep your systems running - and running right - so you minimize downtime and get the greatest possible return from your machine investment.

### services offered

- Repairs for all Hennig and non-Hennig way covers
- Same-day turn-around on diagnosis and repair estimates
- Reverse engineering of existing way covers
- Fast, local access to spare parts and supplies
- Customer training for in-house way cover repair
- Service and repair of Hennig Chip Conveyors
- Preventive maintenance service contracts available
- Service initiated within 48 hours in most locations
- On-site services available
- 90-day warranty on parts and labor

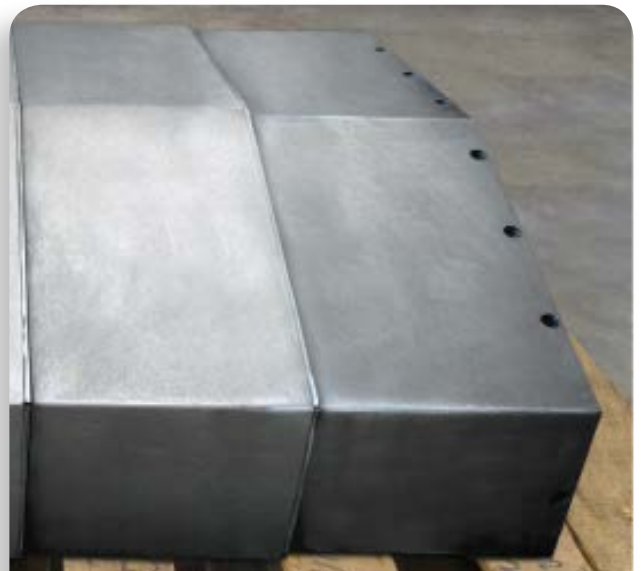
### service. where you need it.

Hennig has way cover repair facilities located throughout the world to better serve our customers.

**See pages 1-2 for a complete list of our repair facilities and contact information.**



↑ Before Hennig Repair



↑ After Hennig Repair



[www.hennigworldwide.com](http://www.hennigworldwide.com)

For over 50 years, Hennig Worldwide has been defining Excellence in Machine Protection, creating regional jobs, serving their local communities, and supporting the global needs of machine tool customers.

Specializing in chip management, machine protection, and facility safety, Hennig products optimize production and keep your shop floor clean and safe.

---

## **MACHINE PROTECTION**

Telescopic Steel Covers  
Modular Face Shields (XYZ Shields)  
Bellows  
Aprons  
Roll Up Covers  
Walk-On/Pit Covers  
Wiper Systems  
Telescopic Springs  
Cable Conduits

## **CHIP SOLUTIONS**

Chip Conveyors  
Chip Disc Filtration (CDF)  
Coolant Tanks  
Turnkey Chip Systems  
Conveyor Networks

## **FACILITY SAFETY**

Walk-On Pit Covers  
Scissor Lift Bellows  
Rooftop Systems  
Platforms and Enclosures  
Guarding and Fencing  
Special Fabrications

---

*See pages 1-2 for contact information*