

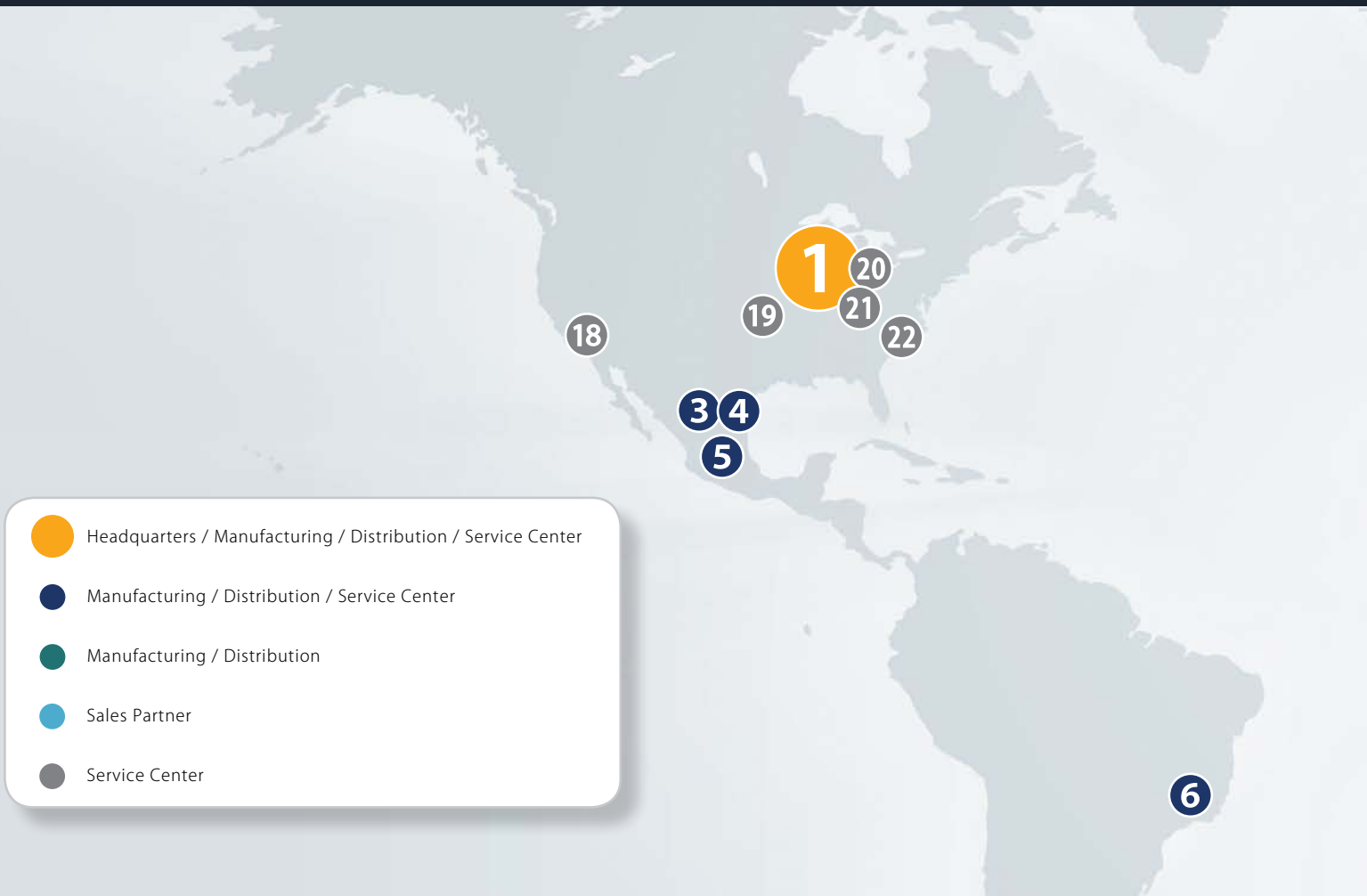
CABLE CONDUITS

MOVING CABLE CARRIERS



HENNIG WORLDWIDE

manufacturing / sales / service centers



1 Hennig, Inc. Global Headquarters
 9900 North Alpine Road
 Machesney Park, IL 61115
 P: + 01 815-316-5124
 F: + 01 815-636-9737
 info@hennig-inc.com

2 Hennig GmbH European Headquarters
 Übereicherstrasse 5
 D-85551 Kirchheim
 P: + 49 89 96096-0
 F: + 49 89 96096-120
 info@hennig-gmbh.de

3 Hennig / Gaden, S.A. de C.V.
 Calzada Abastos N° 235
 Col. Santa María
 Torreón Coahuila, C.P. 27020
 P: + 01 (871) 268 2449
 F: + 01 (871) 268 2449
 ventas@grupogaden.com

4 Hennig / Gaden, S.A. de C.V.
 Calle Primera N° 1037
 Col. Ministro Nazario Ortiz
 Saltillo, Coahuila, C.P. 25100
 P: + 01 (844) 180 0294
 F: + 01 (844) 180 029
 ventas@grupogaden.com

5 Hennig / Gaden, S.A. de C.V.
 Silca N° 4, Col. Vista Hermosa
 Tlalnepantla, México, C.P. 54080
 P: + 52 (55) 5318 4146
 F: + 52 (55) 5319 32
 ventas@grupogaden.com

6 Cobsen Ltda.
 R. Benedito Mazulquim, 425
 18550-000 Boituva CEP, Brazil
 P: + 55 15 3263-4042
 F: + 55 15 3263-4070
 cobsen@cobsen.com.br

7 Hennig U.K. Ltd.
 Unit 6, Challenge Close
 Coventry CV1 5JG
 P: + 44 24 76555690
 F: + 44 24 76256591
 sales@henniguk.com

8 Sermeto E.I. SAS
 Les Rebrillons
 03300 Creuzier-le-Neuf
 P: + 33 470 58 4740
 F: + 33 470 58 0022
 contact@sermeto-ei.com

9 Hennig CZ s.r.o.
 Klánovická 334
 250 82 Úvaly, CZ
 P: + 420 2810 91631
 F: + 420 2810 91625
 info@hennig-cz.com

10 Sur Hennig Pvt Ltd.
 1B, Peenya Ind. Area
 Bangalore 560058
 P: + 91 80 39285510
 F: + 91 80 39285526
 surhennigblr@gmail.com

11 Thodacon Machine Tool Protection Co. Ltd.
 Lu-ou Road No.43
 Hudai Industrial Park, Bin District
 Wuxi 214161 Jiangsu Province, China
 P: + 86 510 8329 1518
 F: + 86 510 8329 1598
 sales@thodacon.cn

12 Osung Mechatronics Co. Ltd.
 Gyungnam Masan-city
 Jinbuk-myun Shincon-li 413-2
 South Korea
 P: + 82 55 271 1821
 F: + 82 55 271 1820
 osgijeon@naver.com



13 Enomoto
5-10 Sohara Koa-Cho
Kakamigahara-Shi, Japan
P: + 81 583 832178
F: + 81 583 897435
kashida@enomotoweb.com

14 Euro-Renaex Sistemas S.L.
Pº Ubarburu 76, Pab.34 - Pol.27
20014 San Sebastian, Spain
P: + 34 943 472225
F: + 34 943 458254
info@ersistemas.com

15 B & S Industrieel Onderhoud
Zirkoonstraat 7, 7554 TT Hengelo (Ov.)
Postbus 69, 7550 AB Hengelo (Ov.)
P: + 31 74 8510600
F: + 31 74 8510605
megen@bs.nl

16 Svenska Maskinkomponenter AB
Brunnsäkersvägen 9
64593 Strängnäs
P: + 46 8 53470770
F: + 46 8 53470775
info@svemako.se

17 Lubrication Equipment Pty. Ltd.
6, Liebenberg Road
1451 Alrode, Johannesburg
P: + 27 11 8645785
F: + 27 11 8648231
sales@lubrequip.co.za

18 Hennig, Inc. California Service Center
11690 Pacific Avenue
Fontana, CA 92337
P: + 01 909-420-5796
info@hennig-inc.com

19 Hennig, Inc. Oklahoma Service Center
900395 S. 3420 Road
Chandler, OK 74834
P: + 01 405-258-6702
F: + 01 405-258-9971
info@hennig-inc.com

20 Hennig, Inc. Michigan Service Center
11879 Brookfield Road
Livonia, MI 48150
P: + 01 734-523-8274
F: + 01 855-427-1549
info@hennig-inc.com

21 Hennig, Inc. Ohio Service Center
11431 Williamson Road
Blue Ash, OH 45241
P: + 01 513-247-0838
F: + 01 513-247-0840
info@hennig-inc.com

22 Hennig, Inc. N. Carolina Service Center
8916 Pioneer Avenue, Dock 14
Charlotte NC 28273
P: + 01 704-588-7200
F: + 01 704-588-7200
info@hennig-inc.com

STABIFLEX CABLE CONDUITS

moving cable carriers

STABIFLEX cable conduits are moving cable carriers which have proved successful in a wide range of applications in machine tools and machining centers. The main feature of this closed cable carrier is that through the fitting of a steel band to one of the four sides the flexible conduit can only bend in the one direction where the steel band is situated. In all other directions of movement the conduit remains stable.

STABIFLEX cable conduits are resistant against all coolants and lubricants normally used in the machine tool industry.

Two qualities are available depending on the traverse speed:

QUALITY G

Featuring a steel band fixed with special glue for speeds of $v \leq 50$ m/min.

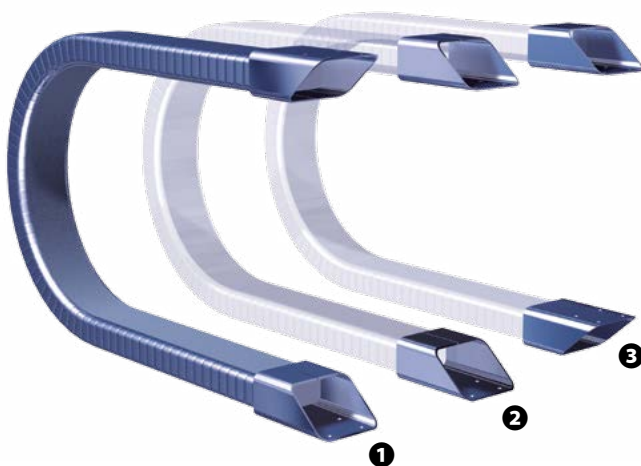
QUALITY K

Featuring a synthetic band fixed with special glue for speeds of $v \geq 50$ m/min.

If no traverse speed is indicated, we automatically choose the G quality.

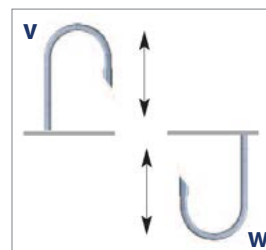
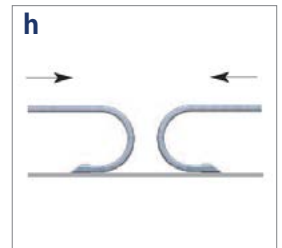
- To obtain the shortest possible length, it is recommended to have the fixed connection at the midpoint of the stroke.
- When choosing the required type of STABIFLEX, an allowance of at least 10% per cable should be considered.
- Made of zinc plated sheet steel.
- To determine the bending radius (KR), multiply the outer diameter of the cables to be installed by a factor of 8 to 10. However, the minimum bending radius indicated by the cable manufacturers is the main criterion.
- Mounting flanges are welded on both ends of the cable conduit.
- In accordance with safety regulations, electrical continuity is maintained between the flanges and the metal conduit. The cables are loosely guided in the STABIFLEX and fastened at the moving and fixed end.
- To ensure long-term functioning, it is necessary to guide the STABIFLEX in support angles or in a channel the length of which should be approx. 1/2 stroke.
- Max. length of the individual types of Stabiflex is 6.5 m, longer lengths can be flanged together.

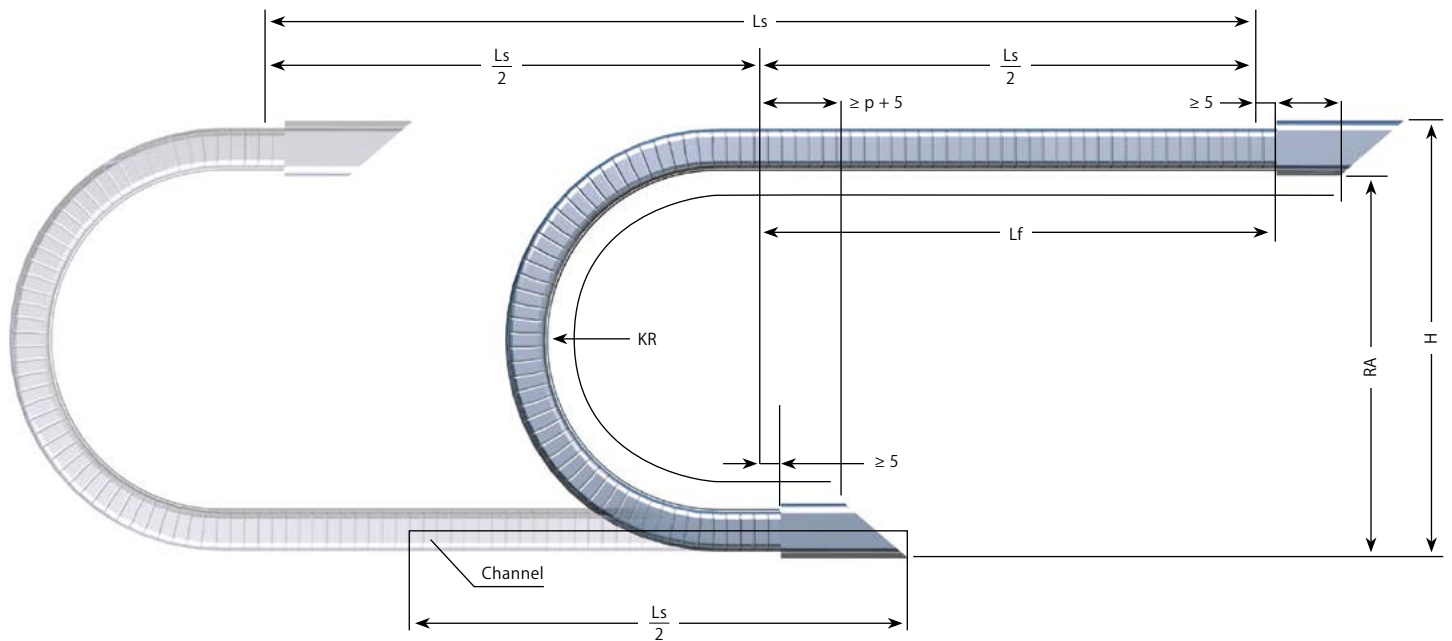
FLANGE ARRANGEMENTS



functioning

- h horizontal
- v vertical standing
- w vertical suspended
- z cross beam - top view





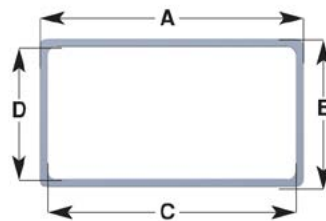
$$L = L_s/2 + 4KR + 50 \text{ (mm)} *$$

$$L = L_s/2 + \pi KR L_s + 2p + 10 \text{ (mm)} **$$

* Approximate value

** Formula used to calculate the precise length (rounded off to 10 mm)

hose cross section



legend

A x B = STABIFLEX - outside cross-section

C x D = STABIFLEX - inside cross-section

Lf = Unsupported length

L = STABIFLEX length

Ls = Travel

KR = Bending radius (Tolerance -20%)

H = Mounting height

p = Depth of conduit fitted in the flange

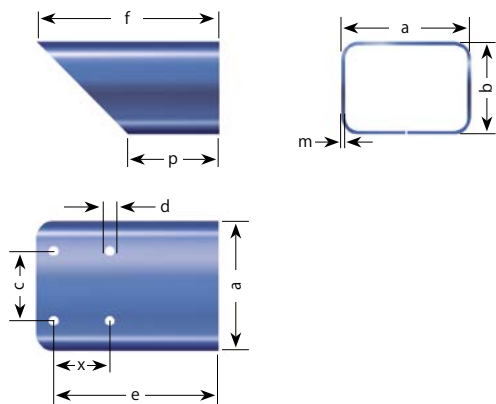
RA = Minimum height of support

Stabiflex Type	A	B	C	D	p	KR** +0° -20°	RA (Includes pre-load)	H	Lfmax	Ls without support	Ls with support	Weight hose kg/m	Weight flanges kg/Pair
0.0	30	20	26	16	25	55	120	144	1000	2000	4000	~ 0.6	~ 0.1
						720	160	194					
1.0	50	30	43	23	30	110	235	269	1500	3000	6000	~ 1.25	~ 0.2
						165	345	379					
1.1	50	50	45	45	50	110	240	294	2000	4000	8000	~ 1.7	~ 0.3
						110	240	290					
2.0	80	45	73	38	45	220	460	510	2000	4000	8000	~ 2.25	~ 0.5
						275	570	620					
2.1	85	60	80	55	65	165	350	415	2500	5000	10.000	~ 2.4	~ 0.6
2.2	95	50	90	45	60	130	280	335	2000	4000	8000	~ 2.9	~ 0.6
						155	335	400					
3.0	110	60	102	52	60	250	525	590	2500	5000	10.000	~ 3.6	~ 1.0
						330	685	750					
3.1	115	80	109	74	80	220	465	550	2500	5000	10.000	~ 3.8	~ 1.2
4.0	170	80	162	72	80	205	435	520	2500	5000	10.000	~ 5.6	~ 1.7
4.1	175	110	167	102	80	285	600	717	2500	5000	10.000	~ 5.8	~ 3.9

STABIFLEX CABLE CONDUITS

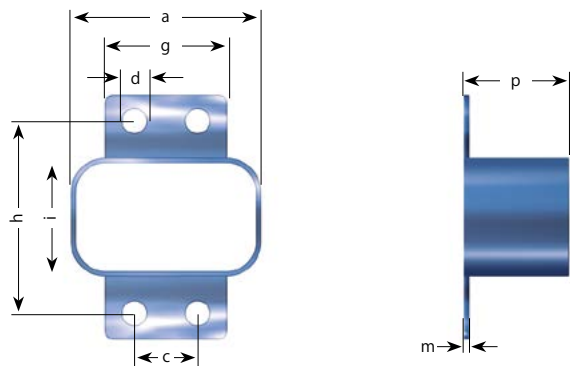
types

STANDARD FLANGES



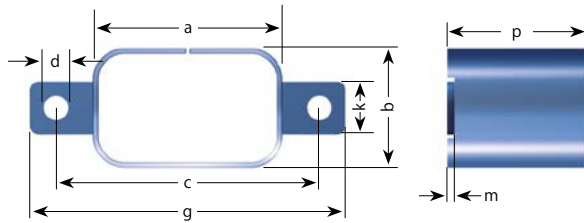
Type	a	b	c	d	e	f	p	m	x
0.0	34	24	13	6	40	50	25	1.5	–
1.0	54	34	22	7	45	60	30	1.5	–
1.1	54	54	20	7	75	100	50	1.5	–
2.0	85	50	50	7	67.5	90	45	2	–
2.1	90	65	50	7	117.5	130	65	2	40
2.2	100	55	50	7	110	120	60	2	40
3.0	115	65	70	9	90	120	60	2	–
3.1	120	85	80	9	142.5	165	80	2	40
4.0	175	85	100	9	120	160	80	2	–
4.1	182	117	140	9	157.5	195	80	3	40

FACE FLANGE TYPE A



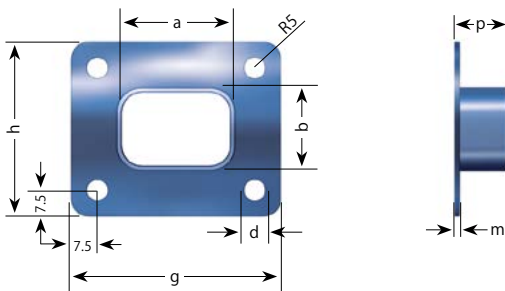
Type	a	b	c	d	g	h	i	p	m
1.0	54	34	18	7	35	70	55	30	1.5
2.0	85	50	45	7	65	85	70	45	2
3.0	115	65	60	9	80	110	90	60	2
4.0	175	85	95	9	120	130	110	80	2

FACE FLANGE TYPE B



Type	a	b	c	d	g	k	p	m
1.0	54	34	75	7	90	15	30	1.5
2.0	85	50	105	7	120	30	45	2
3.0	115	65	140	9	160	35	60	2
4.0	175	85	200	9	220	40	80	2

FACE FLANGE TYPE C



Type	a	b	d	g	h	p	m
0.0	34	24	6	60	50	25	1.5
1.1	54	54	7	85	85	50	1.5
2.1	90	65	7	120	95	65	2
2.2	100	55	7	130	85	60	2
3.1	120	85	9	150	115	80	2
4.1	182	117	9	210	145	80	3

SERVICE & REPAIR

scope of services

WE KNOW HOW EXPENSIVE DOWNTIME CAN BE

That's why we offer quick, responsive, service for the following products:

- Telescopic Steel Covers (see next page for details)
- Bellow Covers
- Aprons & Roll Ups
- Modular Face Shield Systems
- Wiper Systems
- Walk-On Pit Covers

We provide repairs and replacement parts for all the products we sell. With our experienced technicians, it doesn't matter who manufactured the original product, the end result absolutely must meet Hennig standards for quality and safety before we will consider it finished.

OUR SCOPE OF SERVICES:

- Preventative and Predictive Maintenance Training
- Way cover diagnostics and troubleshooting
- Extensive replacement spare parts inventory
- On-Site repairs of waycovers of any make on the market
- Logistics services for minimum downtime

SERVICE & REPAIR CENTERS WORLDWIDE

We have 17 service centers located throughout the world, enabling us to provide fast, localized service no matter where you are. Below is a snapshot of our service & repair locations.

For more details and contact info, see pages 1-2.



SERVICE & REPAIR

for telescopic steel covers

REPAIR & REFURBISHING SERVICES

At Hennig we service everything we sell. Our repair and refurbishment facilities are located in regions worldwide, so you get fast, localized service from experts who speak your language and deeply understand the systems you're using. We have the resources to keep your systems running - and running right - so you minimize downtime and get the greatest possible return from your machine investment.

services offered

- Repairs for all Hennig and non-Hennig way covers
- Same-day turn-around on diagnosis and repair estimates
- Reverse engineering of existing way covers
- Fast, local access to spare parts and supplies
- Customer training for in-house way cover repair
- Service and repair of Hennig Chip Conveyors
- Preventive maintenance service contracts available
- Service initiated within 48 hours in most locations
- On-site services available
- 90-day warranty on parts and labor

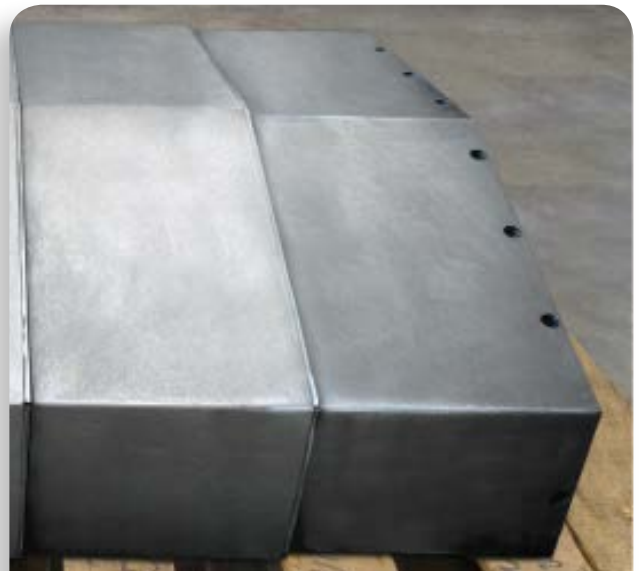
service. where you need it.

Hennig has way cover repair facilities located throughout the world to better serve our customers.

See pages 1-2 for a complete list of our repair facilities and contact information.



↑ Before Hennig Repair



↑ After Hennig Repair



www.hennigworldwide.com

For over 50 years, Hennig Worldwide has been defining Excellence in Machine Protection, creating regional jobs, serving their local communities, and supporting the global needs of machine tool customers.

Specializing in chip management, machine protection, and facility safety, Hennig products optimize production and keep your shop floor clean and safe.

MACHINE PROTECTION

Telescopic Steel Covers
Modular Face Shields (XYZ Shields)
Bellows
Aprons
Roll Up Covers
Walk-On/Pit Covers
Wiper Systems
Telescopic Springs
Cable Conduits

CHIP SOLUTIONS

Chip Conveyors
Chip Disc Filtration (CDF)
Coolant Tanks
Turnkey Chip Systems
Conveyor Networks

FACILITY SAFETY

Walk-On Pit Covers
Scissor Lift Bellows
Rooftop Systems
Platforms and Enclosures
Guarding and Fencing
Special Fabrications

See pages 1-2 for contact information